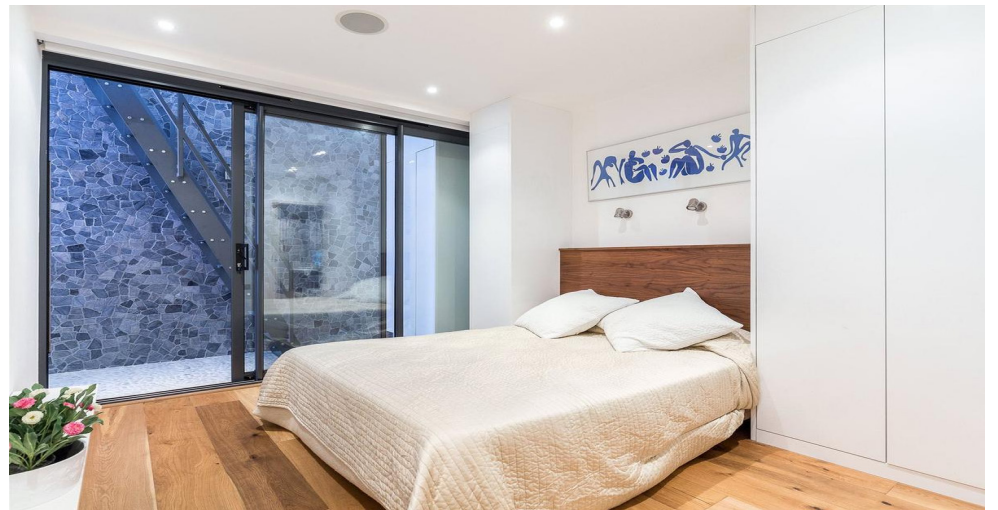




ATHERSTONE MEWS

Kensington, London, SW7

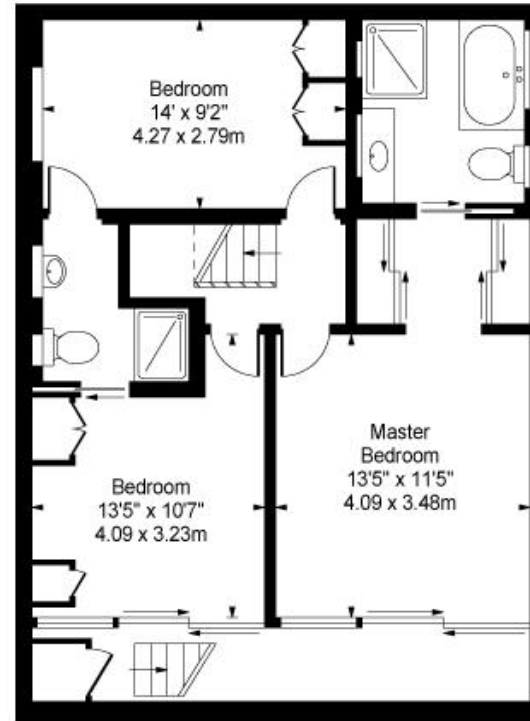


ATHERSTONE MEWS

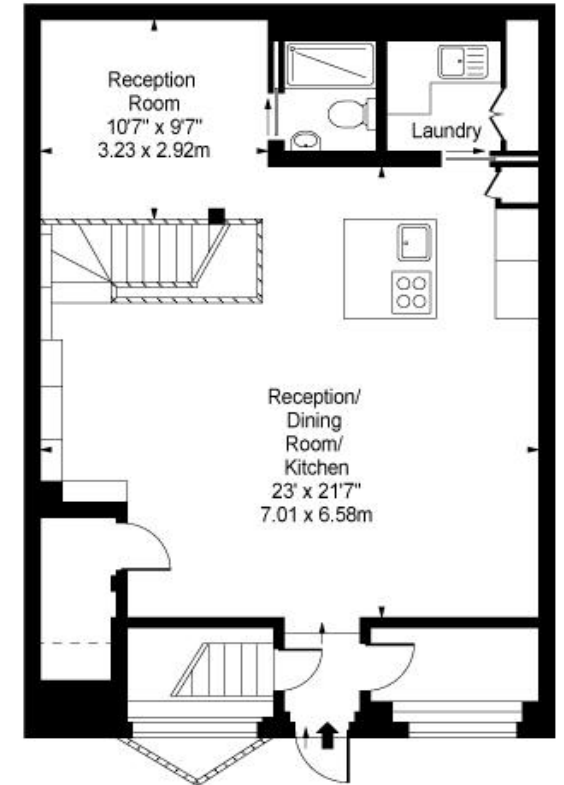
KENSINGTON, LONDON, SW7

APPROX: TOTAL GROSS INTERNAL AREA
1510 SQ FT / 140.28 SQ M

Disclaimer: Floor plan measurements are approximate and are for illustrative purposes only. While we do not doubt the floor plan accuracy and completeness, you or your advisor should conduct a careful, independent investigation of the property in respect of monetary valuation.



Lower Ground Floor



Ground Floor

Approx Gross Internal Area 1510 Sq Ft - 140.28 Sq M

For Illustration Purposes Only - Not To Scale
Floor Plan by www.bpmmediagroup.com
Ref: No. P51972

Atherstone Mews, Kensington, London SW7

Rental: **£1,450** PW

3 Bedroom Mews, Fees Apply, EPC D

Viewings strictly via [Smart Move Mayfair](#)

An impressive and rare opportunity to acquire this luxury residence located on one of the most sought after locations in Kensington. Antherstone Mews has imposing dimensions, with elegant entertaining space, three excellent bedroom suites and a grand open plan reception leading to the kitchen and dining area. The 1,510 sq ft is elegantly designed for entertaining and enjoyment of private luxury. The property benefits from Lutron lighting, integrated sound system, under floor heating & Poggenpohl kitchen with Miele appliances.

KEY FEATURES

- 3 Bedroom Suites
- 2 Bathrooms Suites
- 2 Receptions
- Open Plan Dining
- Utility room
- Fitted in wardrobe
- Furnished
- 1510 sq ft

LOCAL AREA

Located to the north of the Brompton Road and just to the south of Hyde Park it is walking distance of all the many international amenities of the Knightsbridge area.





Smart Move™

84 BROOK STREET
MAYFAIR
W1K 5EH

T: 020 7698 4433
F: 020 3709 8571
E: info@smartmove.co.uk

www.smartmove.co.uk

Smart Move have no authority to make or give any representations or warranties in relation to the property. These particulars do not form part of any offer or contract and must not be relied upon as statements or representations of fact. Any areas, measurements or distances are approximate. The text, photographs and plans are for guidance only and are not necessarily comprehensive. It should not be assumed that the property has all the necessary planning, building regulation or other consents and Smart Move have not tested any services, equipment or facilities. Purchasers must satisfy themselves by inspection or otherwise. 2015