





ENNISMORE GARDENS, KNIGHTSBRIDGE, LONDON SW7

£2,250 Per Week

An impressive and rare opportunity to acquire this luxury residence located on one of the most sought after private garden squares in central London. The apartment has imposing dimensions, with elegant entertaining space, two excellent bedroom suites and a grand reception room opening onto a secluded private garden. The 1,800 sq ft is elegantly designed for entertaining and enjoyment of private luxury.

FEATURES

- Luxury Two Bedroom Duplex Apartment
- High Ceilings & Big Bay Windows with Excellent Views
- Private Garden
- Open Plan Living & Dining Room
- Walking Distance to Harrods & Knightsbridge Underground Station

OVERVIEW

- 1,800 SQ.FT
- Impressive Split Level Two Bedroom Apartment
- Designed to a High Standard
- Bespoke Kitchen
- Available on Long Let Only

START YOUR JOURNEY...

t: 020 7698 4433
e: info@smartmove.co.uk

w: smartmove.co.uk
a: 84 Brook Street, Mayfair, W1K 5EH



START YOUR JOURNEY...

t: 020 7698 4433
e: info@smartmove.co.uk

w: smartmove.co.uk
a: 84 Brook Street, Mayfair, W1K 5EH



START YOUR JOURNEY...

t: 020 7698 4433
e: info@smartmove.co.uk

w: smartmove.co.uk
a: 84 Brook Street, Mayfair, W1K 5EH



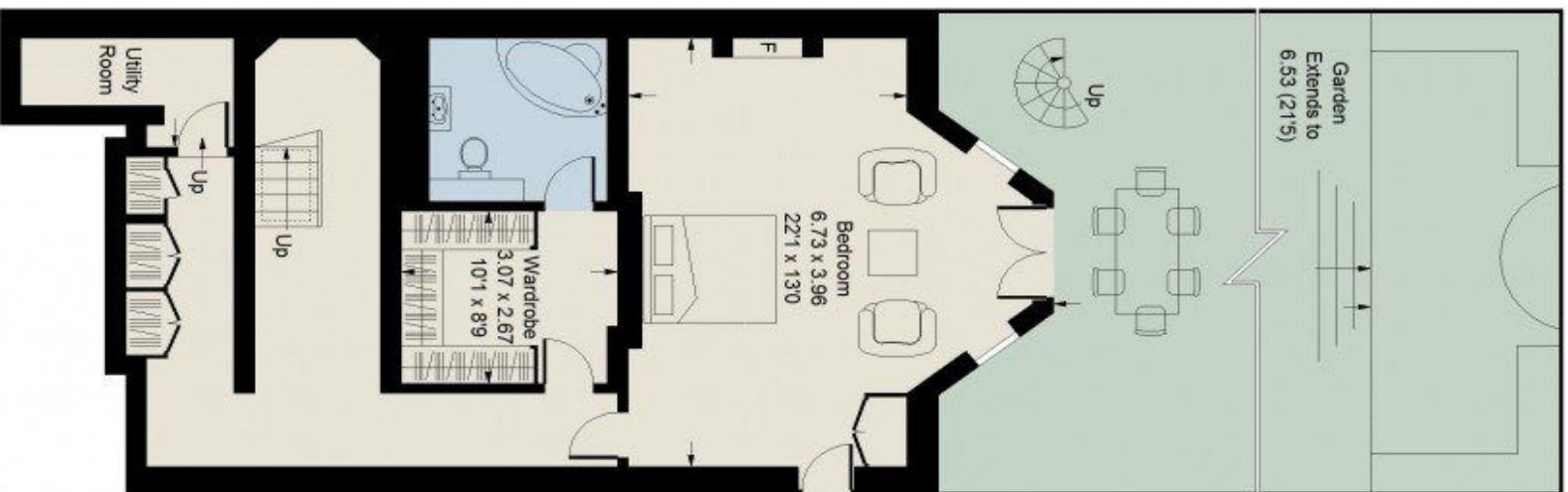
START YOUR JOURNEY...

t: 020 7698 4433
e: info@smartmove.co.uk

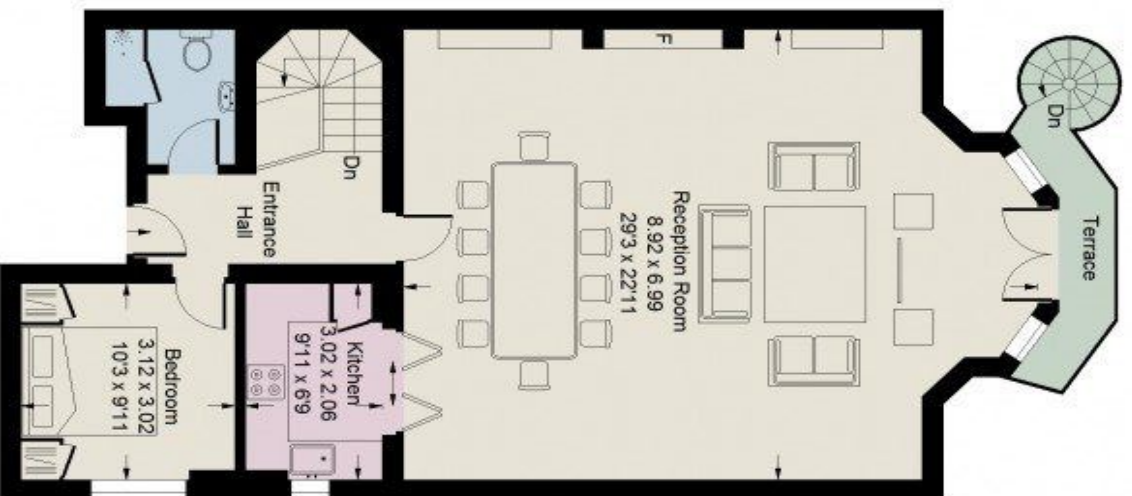
w: smartmove.co.uk
a: 84 Brook Street, Mayfair, W1K 5EH

Ennismore Garden, SW7

Approx. Gross Internal Area
171.3 sq m / 1844 sq ft



Lower Ground Floor



Raised Ground Floor

 = Reduced headroom below 1.5 m / 5'0"

Whilst every attempt has been made to ensure the accuracy of the floor plan, measurements are approximate and not to scale. No guarantee is given on the total square footage of the property quoted on the plan. Figures given are for guidance. Plan is for illustration purposes only.

START YOUR JOURNEY...

t: 020 7698 4433
e: info@smartmove.co.uk

w: smartmove.co.uk
a: 84 Brook Street, Mayfair, W1K 5EH