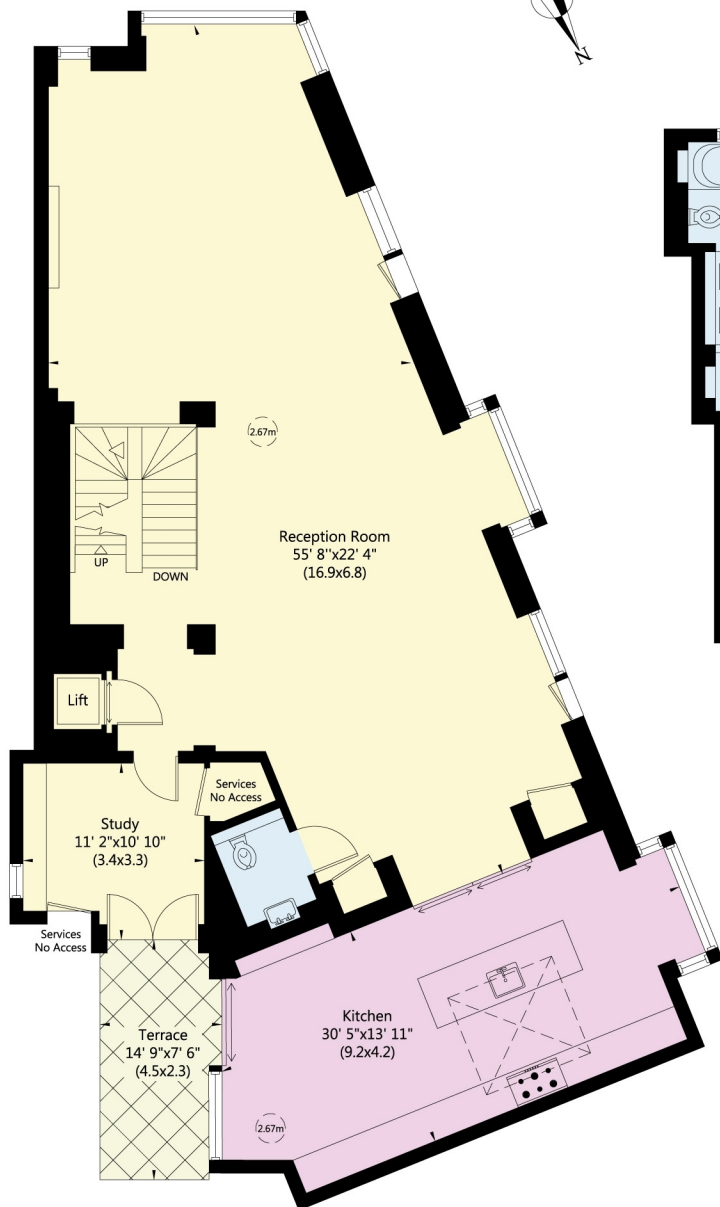
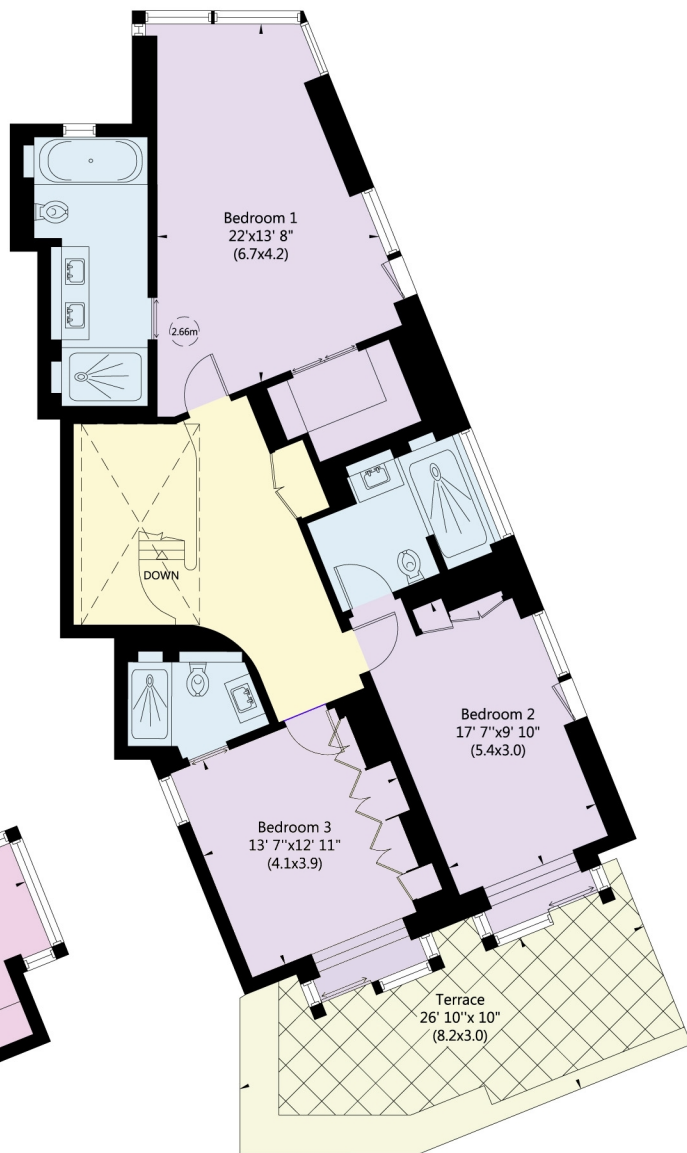


THE LANSBURY
BASIL STREET
LONDON SW3

Gross Internal Area: 286 Sq. metres
3083 Sq. feet

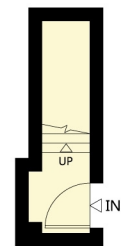


Fourth Floor



Fifth Floor

Not to scale, for guidance only and must not be relied upon as a statement of fact. All measurements and areas are approximate only (and have been prepared in accordance with the current edition of the RICS Code of Measuring Practice).



Third Floor