



Eaton Place, Belgravia, London SW1

Price: **£1,250 pw**

Furnished, EPC D

Viewings strictly via [Smart Move Mayfair](#)

A recently redecorated one bedroom flat on the first floor apartment of a white stucco fronted conversion on this highly sought after street. The property benefits from a private south facing balcony and plenty of storage.

Location

The flat is well positioned, with the amenities of the Kings Road, Motcomb Street and Elizabeth Street a short walking distance away. For transport, Victoria station (for the Victoria, District and Circle lines and Overground services) and Sloane Square Tube station (for the District and Circle lines) are both closeby.

Accommodation and Amenities

Master bedroom with en suite bathroom, reception room, separate kitchen, guest cloakroom and balcony.

Terms

Furnished for a long let

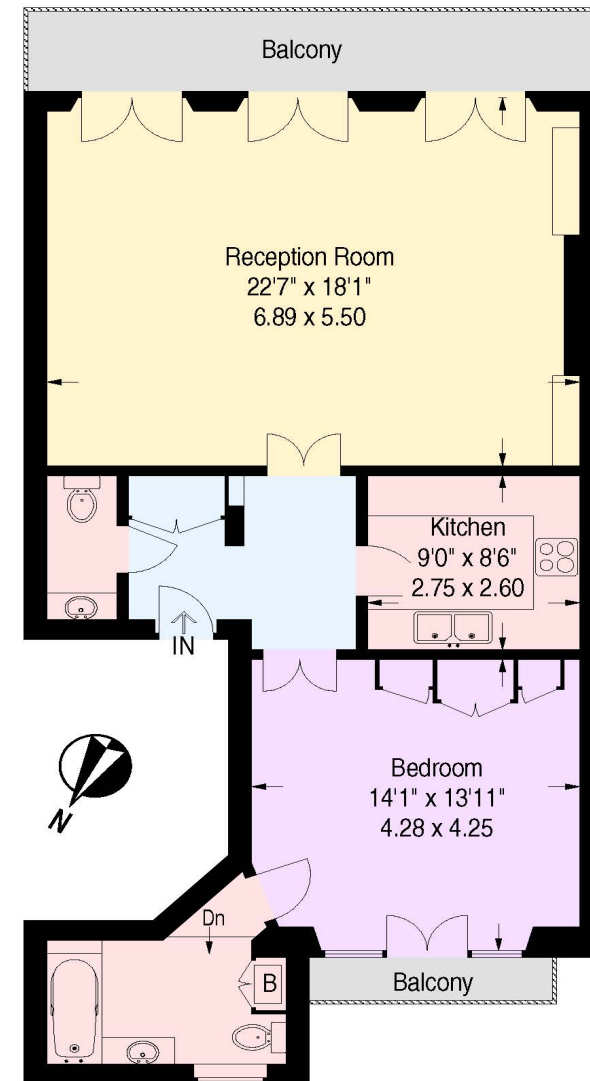
Local Authority: City of Westminster

Guide price: £1,250 per week

All potential tenants should be advised that, as well as rent, an administration fee of £288 and referencing fees of £48 per person will apply when renting a property. There will also be a £48 charge to register your deposit with the Tenancy Deposit Scheme if applicable. (All fees shown are inclusive of VAT.) Smart Move is a member of the ARLA Client Money Protection Scheme and our redress scheme for consumers is Ombudsman Services: Property.

Eaton Place, SW1X

Approximate Gross Internal Area :-
80 sq m / 861 sq ft



First Floor

Illustration for identification purposes only, measurements are approximate, not to scale.



84 BROOK STREET
MAYFAIR
W1K 5EH

T: 020 7698 4433
F: 020 8345 5888
E: info@smartmove.co.uk

www.smartmove.co.uk

Smart Move have no authority to make or give any representations or warranties in relation to the property. These particulars do not form part of any offer or contract and must not be relied upon as statements or representations of fact. Any areas, measurements or distances are approximate. The text, photographs and plans are for guidance only and are not necessarily comprehensive. It should not be assumed that the property has all the necessary planning, building regulation or other consents and Smart Move have not tested any services, equipment or facilities. Purchasers must satisfy themselves by inspection or otherwise. 2015