



HANS PLACE

Knightsbridge, London, SW1X



Luxury Living

A Stunning three-bedroom luxury apartment located on the second floor has imposing dimensions offering large open plan living/ dining room, 2 double bedrooms, one master bedroom including fitted wardrobes, bespoke kitchen with granite worktop & integrated appliances.

Hans Place is ideally positioned for the many shops including Harrods restaurants, museums, walking distance to Hyde Park & excellent transport links.

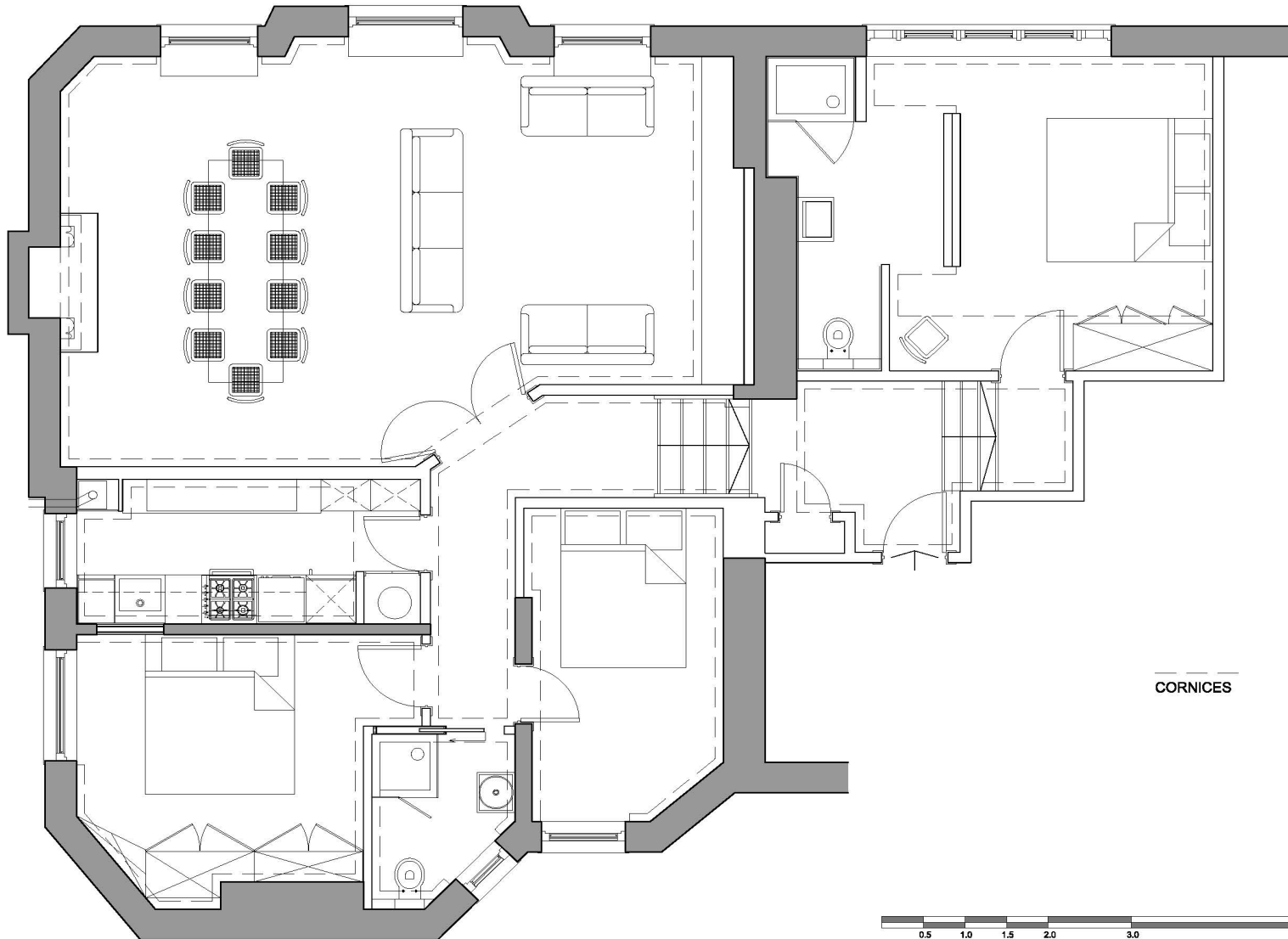




HANS PLACE
Knightsbridge, London, SW1X



HANS PLACE



CORNICES



1 LEVEL L02 - PROPOSED PLAN
SCALE: 1:80 @ A3

Hans Place, Knightsbridge, London SW1X

Price: **£4,395,000**

Freehold, EPC D

Viewings strictly via [Smart Move Mayfair](#)

Proud to present this beautiful interior designed 3 bedroom bespoke apartment. Boasting stunning views with open plan entertaining area with state of the art features and design. Throughout the property furnishings have been and picked and shipped from all over the world. The kitchen has bespoke bronzed mirrored cabinetry, comes fully equipped with Miele dishwasher, coffeemaker, oven, fridge freezer, microwave. The work surfaces are Italian Carrera marble. The 2 other bedrooms are also furnished with designer sculptures and fittings to ensure a luxuriant feel. The second bathroom is located directly between the second and third bedrooms and also has marble and large rain-shower. The connecting hallways are just as luxurious as the rest of the apartment with thick pile carpets, oak wall paneling and Gary Scott commissioned sculptures.

KEY FEATURES

- Luxury Three Bedroom Apartment
- Share of Freehold (999 Year Lease from Decmber 2002)
- Service Charge £2,400 Per Annum
- Excellent Location
- Two Bathrooms
- Interior Designed
- Access to Private Garden

TRANSPORT

KNIGHTSBRIDGE & SLOANE SQUARE UNDERGROUND STATION, ZONE 1

Circle

District

Piccadilly





84 BROOK STREET
MAYFAIR
W1K 5EH

T: 020 7698 4433
F: 020 8345 5888
E: info@smartmove.co.uk

www.smartmove.co.uk

Smart Move have no authority to make or give any representations or warranties in relation to the property. These particulars do not form part of any offer or contract and must not be relied upon as statements or representations of fact. Any areas, measurements or distances are approximate. The text, photographs and plans are for guidance only and are not necessarily comprehensive. It should not be assumed that the property has all the necessary planning, building regulation or other consents and Smart Move have not tested any services, equipment or facilities. Purchasers must satisfy themselves by inspection or otherwise. 2015